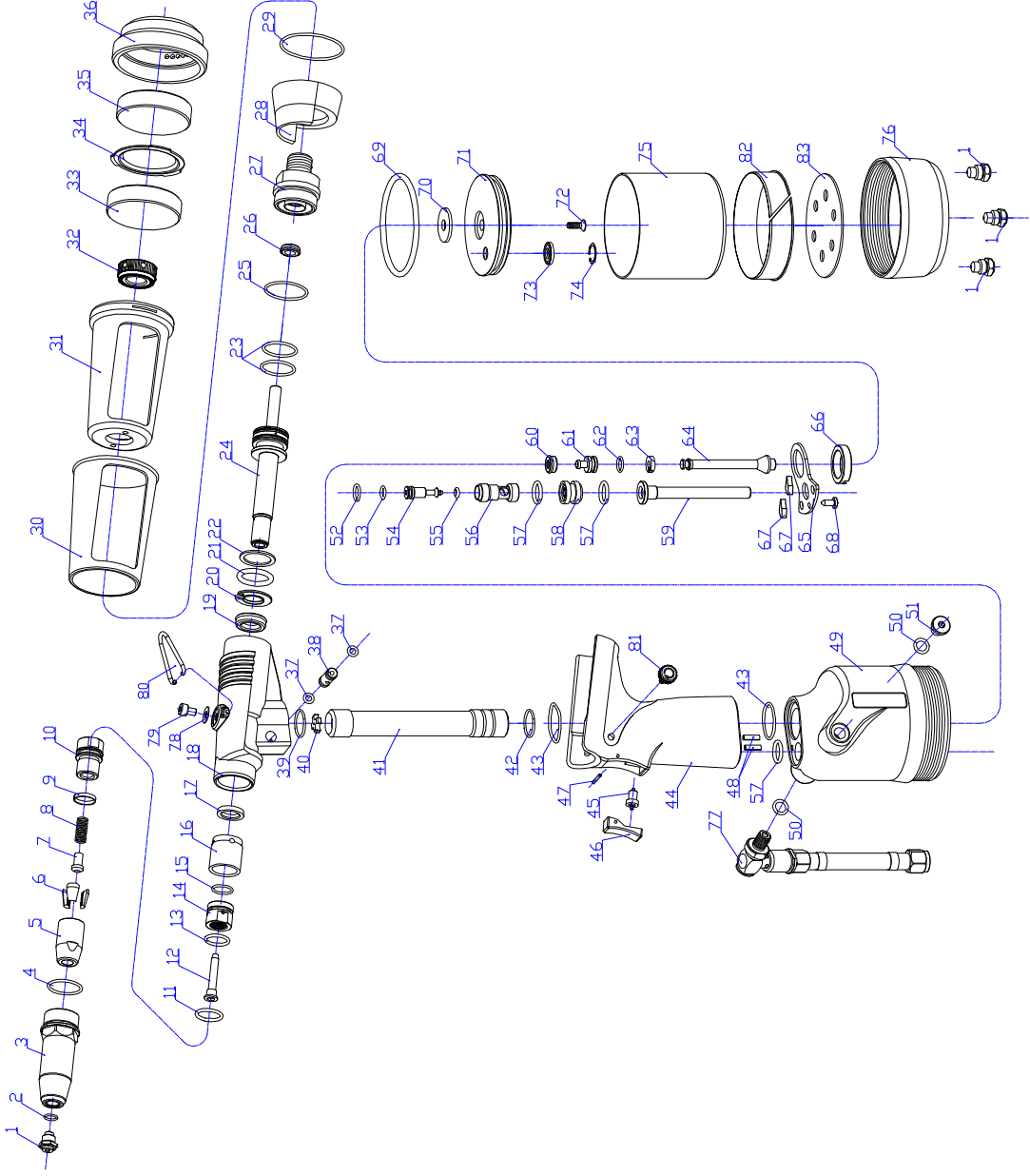


# OS-1510 GAV HAVALI POP PERÇİN



S1

| PART NO. | DESCRIPTION          | Req QTY | PART NO. | DESCRIPTION            | Req QTY | PART NO. | DESCRIPTION             | Req QTY |
|----------|----------------------|---------|----------|------------------------|---------|----------|-------------------------|---------|
| 1        | NOSEPIECE 2.4        | 1       | 27       | END CAP                | 1       | 56       | VALVE BODY              | 1       |
| 1        | NOSEPIECE 3.2        | 1       | 28       | STEM COLLECTOR ADAPTOR | 1       | 57       | O RING                  | 3       |
| 1        | NOSEPIECE 4.0        | 1       | 29       | O RING                 | 1       | 58       | VALVE SEAT              | 1       |
| 1        | NOSEPIECE 4.8        | 1       | 30       | STEM COLLECTOR OUTER   | 1       | 59       | TRANSFER TUBE           | 1       |
| 2        | O RING               | 1       | 31       | STEM COLLECTOR INNER   | 1       | 60       | LIP SEAL                | 1       |
| 3        | NOSE CASING          | 1       | 32       | RETAINING NUT          | 1       | 61       | OIL TUBE PISTON         | 1       |
| 4        | O RING               | 1       | 33       | SILENCER               | 1       | 62       | O RING                  | 1       |
| 5        | JAW HOUSING          | 1       | 34       | STEM COLLECTOR END CAP | 1       | 63       | PISTON RING             | 1       |
| 6        | JAWS                 | 1       | 35       | SILENCER               | 1       | 64       | PISTON ROD              | 1       |
| 7        | JAW SPREADER         | 1       | 36       | SILENCER CAP           | 1       | 65       | CLAMP PLATE             | 1       |
| 8        | SPRING               | 1       | 37       | O RING                 | 2       | 66       | SET NUT                 | 1       |
| 9        | LOCK RING            | 1       | 38       | ADJUSTING BUTTON       | 1       | 67       | SILENCER                | 2       |
| 10       | JAW SPREADER HOUSING | 1       | 39       | O RING                 | 1       | 68       | TAPPING SCREW           | 1       |
| 11       | O RING               | 1       | 40       | STAR WASHER            | 1       | 69       | O RING                  | 1       |
| 12       | VACUUM SLEEVE        | 1       | 41       | OIL TUBE               | 1       | 70       | WASHER                  | 1       |
| 13       | PTFE RING            | 1       | 42       | O RING                 | 1       | 71       | PISTON                  | 1       |
| 14       | SET NUT              | 1       | 43       | O RING                 | 2       | 72       | BOLT                    | 1       |
| 15       | O RING               | 1       | 44       | HANDLE                 | 1       | 73       | LIP SEAL                | 1       |
| 16       | SEAL HOUSING         | 1       | 45       | TRIGGER VALVE          | 1       | 74       | RETAINING RING          | 1       |
| 17       | SEALING RING         | 1       | 46       | TRIGGER                | 1       | 75       | ALUMINUM CYLINDER LINER | 1       |
| 18       | HEAD ASSEMBLY        | 1       | 47       | TRIGGER PIN            | 1       | 76       | BASE COVER              | 1       |
| 19       | LIP SEAL             | 1       | 48       | SPRING PIN             | 2       | 77       | ON/OFF ASSEMBLY         | 1       |
| 20       | SEAL RETAINER        | 1       | 49       | PLASTIC CYLINDER       | 1       | 78       | WASHER                  | 1       |
| 21       | O RING               | 1       | 50       | O RING                 | 2       | 79       | OIL SCREW               | 1       |
| 22       | PLASTIC RING         | 1       | 51       | SCREW                  | 1       | 80       | HOOK                    | 1       |
| 23       | O RING               | 2       | 52       | O RING                 | 1       | 81       | ADJUSTING NUT           | 1       |
| 24       | HEAD PISTON          | 1       | 53       | O RING                 | 1       | 82       | SPACER                  | 1       |
| 25       | O RING               | 1       | 54       | VALVE SPOOL            | 1       | 83       | CUSHION                 | 1       |
| 26       | LIP SEAL             | 1       | 55       | O RING                 | 1       |          |                         |         |